



Carport solar mounting system

Economical multi-function structure for solar purpose

- Effectively use of the space while generating electricity.
- Special tailored for most module types, orientations and inclinations.
- Long spans between foundations saves cost.
- Economical multi-function structure, ideal to present image



Capacity: 50KW

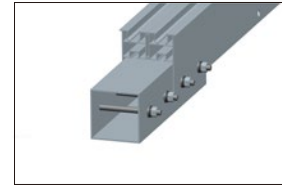
Location: Japan



Features

Install site	Open terrain
Elevation angle	Recommend below 30°
Wind speed	Up to 88m/s(316.8kmh/196.9mph)
Snow load	Up to 150cm
Standard	AS/NZ1170.2:2011, JIS C 8955:2011, other international standards
Distance between footings	5000mm above
Clearance	Up to request
PV module	Framed, unframed
Module orientation	Landscape, portrait
Size of module array	Any layout up to site condition
Foundation	Pre-cast concrete, bored pier, ground screw
Material	Anodized aluminum 6005 T6, stainless steel 304, hot-dipped galvanized steel Q253B
Color	Natural, powder coated
Module widths	Maximum 1.0m
Module lengths	Maximum 2.0m
Warranty	10 years limited warranty, refer to warranty doc

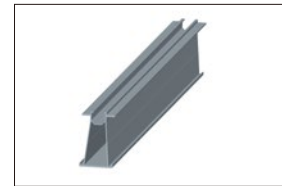
- All profiles are available in various lengths or can be cut to measure



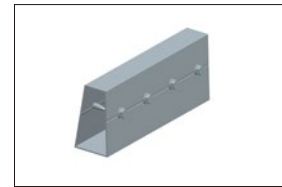
Supporting Beam & Connector



Foot Seat



Rail



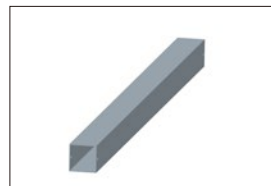
Rail Connector



End Clamp



Inter Clamp



Square Tube



Open terrain



10
Years
Warranty



Framed module



Unframed module



Orientation landscape



Orientation portrait

